

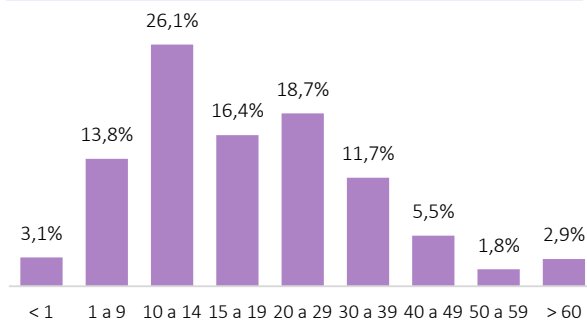


## INFORME EPIDEMIOLÓGICO

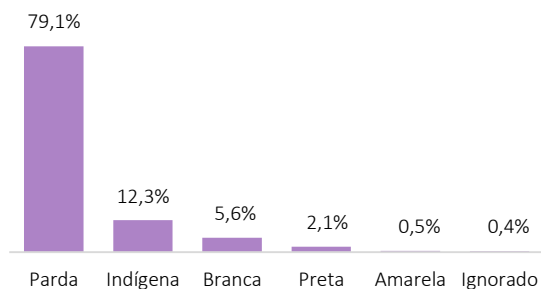
### Casos notificados

4.691

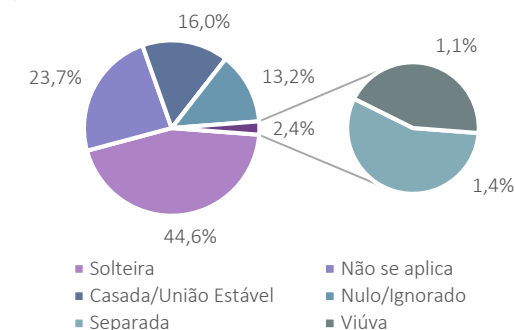
### Faixa etária (em anos)



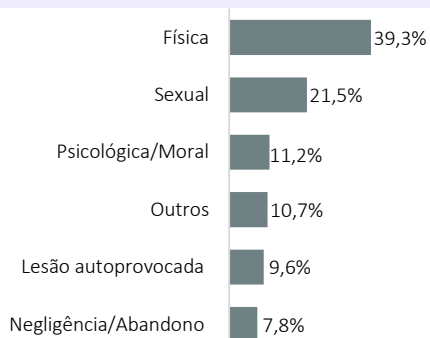
### Raça/Cor



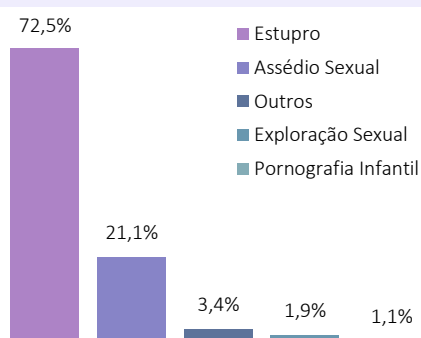
### Situação Conjugal



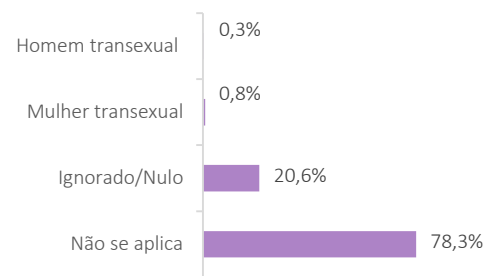
### Tipo de violência



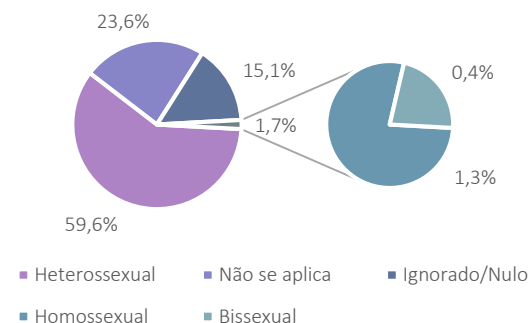
### Violência Sexual



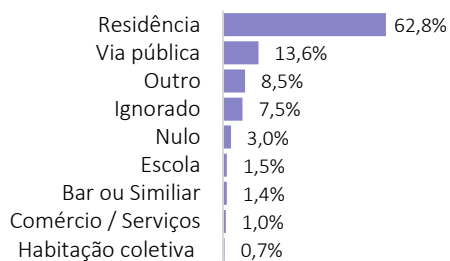
### Identidade de Gênero



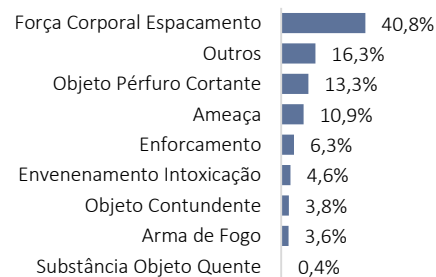
### Orientação Sexual



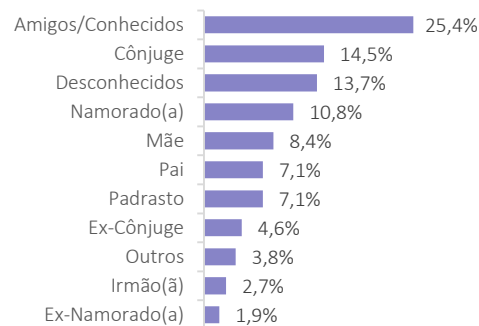
### Local de Ocorrência



### Meio de Agressão



### Vínculo com o Suposto Agressor



### Taxa de Incidência (100 mil habitantes)

